



SUPPLY,CASTING AND ERECTION OF REINFORCED SOIL WALL CHAKAN,MAHARASHTRA

ENVIRONMENTAL/ SLOPE PROTECTION/EARTH RETAINING

Product: Paraweb & Geotextile

Problem: The Difference between the ground level and the road level was of maximum 10meters,so there was need of placing a retaining wall which can retain the earth,hence matching the ground level with the road level.The movement of heavy vehicles was not feasible from the road level towards the company unit.

Solution: Reinforced Earth Wall with concrete panels as facia and Paraweb as reinforcement was selected as the best solution for the above problem.Basically 3 types of panels were used as facia.The Standard Panels were T shaped,some of the top panels cruciform shaped of varying height and the bottom panels used were half panels.Some special end panels and corner panels were also used.The project was completed 6 months in the scheduled time.

The structure is well aligned and has withstood 2 monsoons

Client Name:

KSH Distripark.LTD

Main Contractor Name:

Atharva Construction

Consultant:

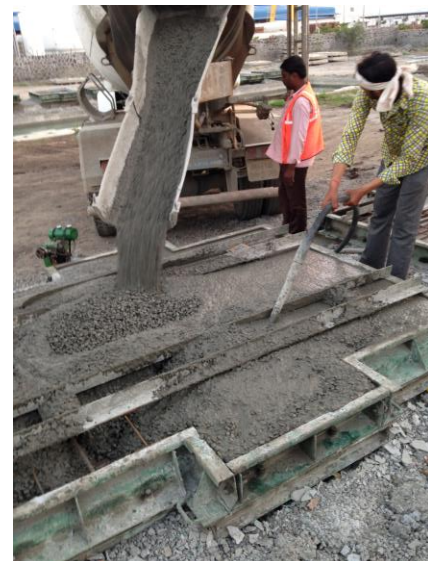
Product Used:

Paraweb & Geotextile

Construction information:

Construction Date:

Completion Date



Picture:01
Casting of Facia Panel



Fig:01
Deep water curing process.



Fig:02
Paraweb laying process

Paraweb is a flat strip version of a high strength, low weight ,non corrodible cable called Parafil. It is one of the first ever soil reinforcing material used in the world market and came into use from 1977. It comprises polyester yarn encased in tough and durable polyethylene sheath.

Paraweb is available in different grades of strength varying from 30 KN to 100 KN and the roll lengths are of 100m.



Picture:04
Erection of panel



Fig :03
Completed Structure.

ATHARVA CONSTRUCTION

Off.no.23,Second Floor,J.K.Plaza,Plot No.240,Opp.Durga Mata Mandir Near Shivaji Chowk,
Panvel-410206,Dist.Raigad,Maharashtra.M-7738650006/9, Telefax:+91-22-27482871
Website:www.atharvaconstruction.com Email:contact@atharvaconstruction.com